

ICAO - INSTRUMENT APPROACH CHART

APP Romagna Approach TWR Forlì Tower
 Romagna Radar
 118.15
 (124.85)

119.75
 (118.95)

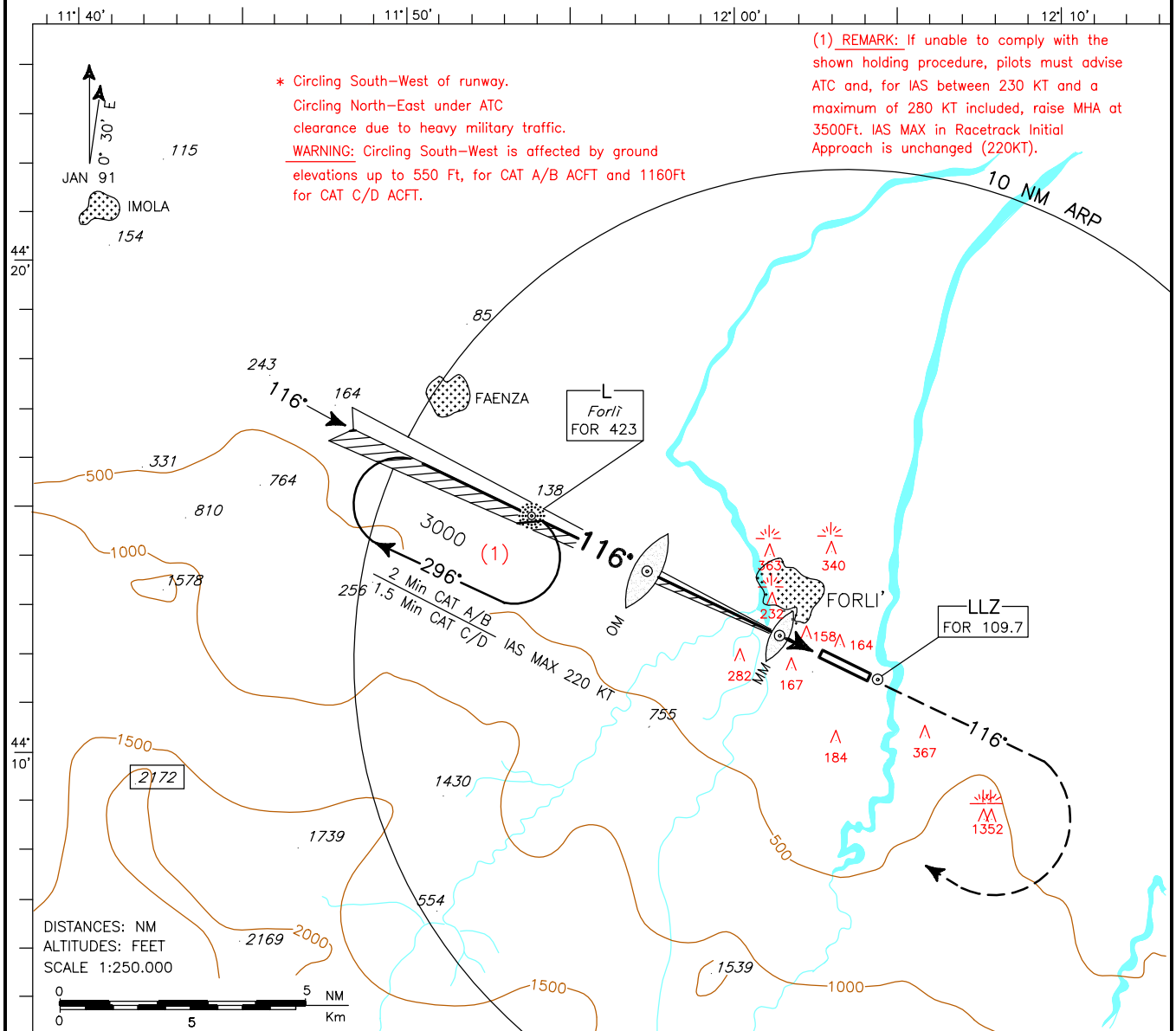
AD ELEV
 97

**L-P
K** FORLÌ
 L/ILS-P

RWY 12

DOC. 8168 - ED. 3 - 1986

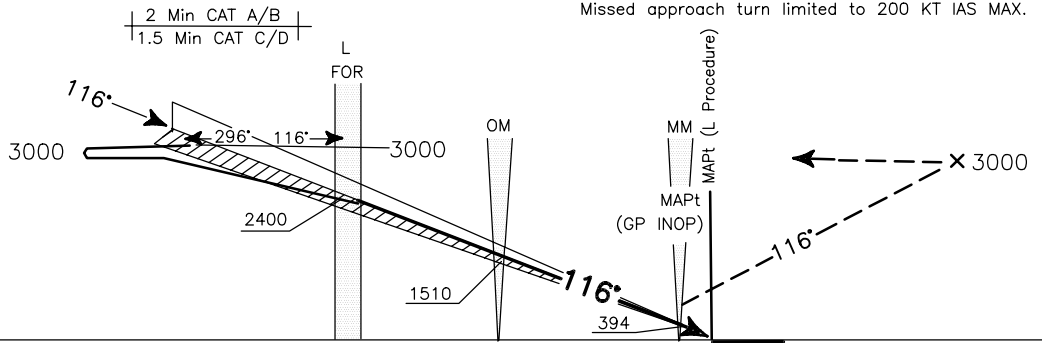
CHANGE: MISSED APPROACH UPDATED.



TRANSITION ALT 6000

MISSED APPROACH: Proceed on track 116° climbing to 3000 Ft. At 3000 Ft turn right to join holding pattern. Missed approach turn limited to 200 KT IAS MAX.

ILS RDH 20.50 M
 GP 3.3°



NM	16	15	14	13	12	11	10	9	8	7	6	5	4	3	2	1	0	1	2	3	4	5	NM
----	----	----	----	----	----	----	----	---	---	---	---	---	---	---	---	---	---	---	---	---	---	---	----

OCA (OCH)		A	B	C	D
STRAIGHT IN APPROACH	L	1170 (1080)			
	ILS	350 (253)	362 (265)	370 (273)	381 (284)
	GP INOP	540 (450)			
* CIRCLING L	1170 (1080)		1760 (1670)		
* CIRCLING ILS	980 (880)		1760 (1670)		
* CIRCLING GP INOP	980 (890)		1760 (1670)		

GS	L-OM	OM-MM	MM-THR
	2.53 NM	3.18 NM	0.66 NM
100	1:31	1:54	0:24
120	1:16	1:35	0:20
140	1:05	1:22	0:17
160	0:57	1:12	0:15
180	0:51	1:04	0:13

